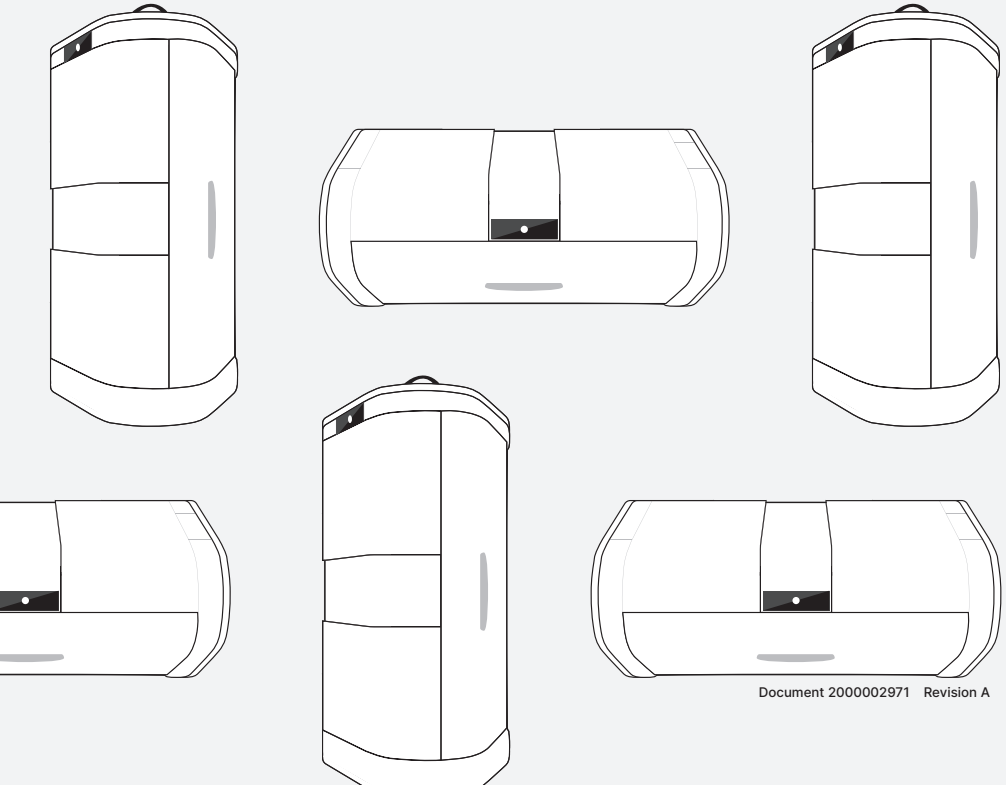


innovia®

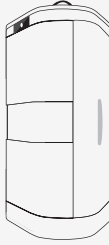

Instruction Manual

Touchless Paper Towel Dispenser




Package Contents

COUNTERTOP

**AC
POWER ADAPTER**
x1



**THIS
USER GUIDE**
x1

UNDER CABINET




**AC
POWER ADAPTER**
x1



**THIS
USER GUIDE**
x1



**INNOVIA
MOUNTING BRACKET**
x1



**0.6" DISPENSER
SECURING SCREWS**
x6



**0.4" UNDER CABINET MOUNTING
SELF-TAPPING SCREWS**
x5



**1.2" WALL MOUNTING
SELF-TAPPING SCREWS**
x5




**1.2"
WALL ANCHORS**
x5



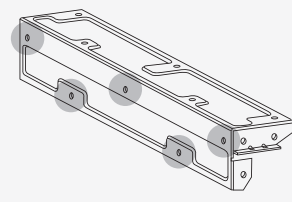
TEMPLATE
**MOUNTING
TEMPLATE BOOKLET**
x1

Bracket and Dispenser Installation

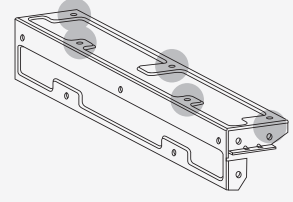


Note: If you've purchased the countertop version of Innovia please skip to towel installation. Do not place your unit near any cooking appliances.

A

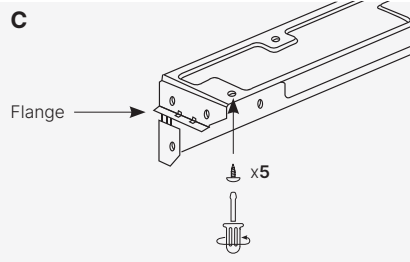


B

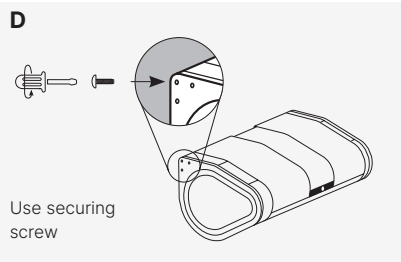


- Determine mounting position: wall mounting (A) or under cabinet (B).
- Tape template to position dispenser to wall or under cabinet. Mark the five mounting hole locations.
- Remove template from surface, place bracket on mounting surface and verify that the marked holes align with the bracket holes.
- Remove bracket and pre-drill holes if mounting to drywall or hardwood.
- If mounting to drywall, install wall anchors into pre-drilled holes.
- Screw bracket into place (C). Ensure flange on side of bracket is horizontal.
- Screw dispenser onto bracket. (D)


C




D



WALL MOUNTING




Use ¼" drill bit to pre-drill the holes for drywall anchors. If a stud is present, screw straight into the stud, do not pre-drill holes.




Mount with provided 1.2" self-tapping screws.

UNDER CABINET

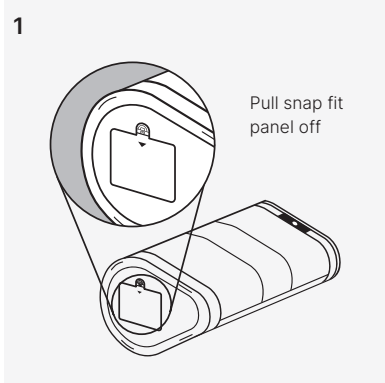


Hardwood cabinets: we recommended pre-drilling with ⅛" bit prior to installing screws. All other material: Pre-drill is not required.

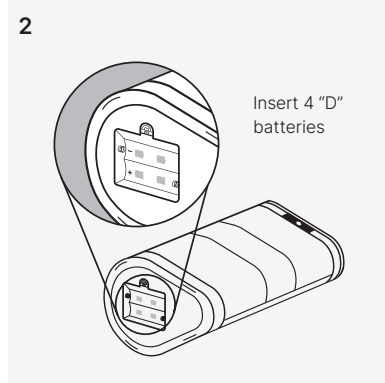


Mount with provided 0.4" self-tapping screws.

Power



Pull snap fit panel off



Insert 4 "D" batteries

The Innovia under cabinet unit runs via the provided AC adapter. The countertop unit can run with batteries or the provided AC adapter.

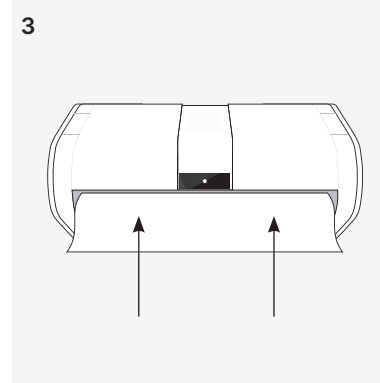
To use the adapter, plug it into the nearest wall socket, then into the Innovia Dispenser unit.

Power jack locations:

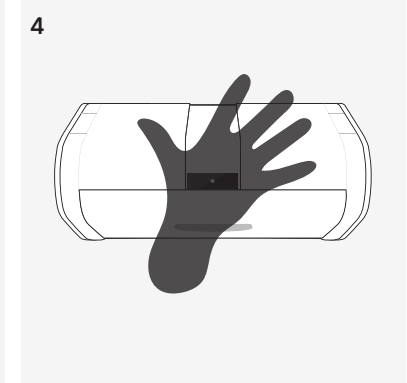
- Countertop: Backside of dispenser
- Under cabinet: Left side of dispenser

For battery operation of the countertop unit, gently pull off the snap fit panel at the bottom of the unit (1).

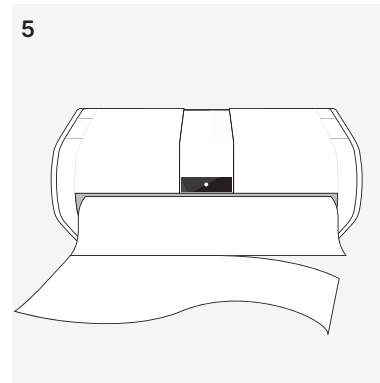
Load 4 "D" batteries into the slot (2) as indicated in the battery compartment and replace the snap fit panel.



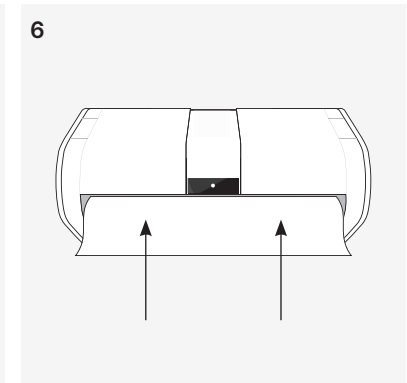
After a 3 second delay, the Innovia Dispenser will retract the exposed portion of towel.



Place hand in front of the sensor to dispense towel.

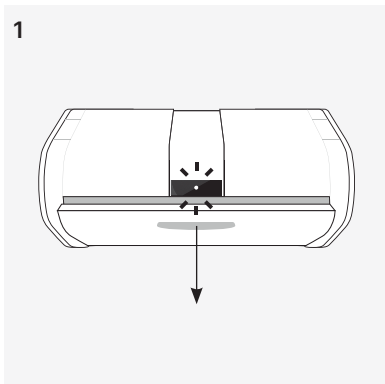


Tear off the desired amount of towel at the perforation. This length of towel will now be set to this same length for future dispenses until dispenser door is opened again and reset.

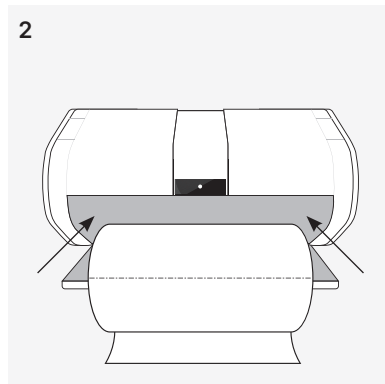


The Innovia Dispenser will then retract the exposed towel.

Loading & Setting Towel Length



Grasp the handle and squeeze to unlatch the paper towel compartment. A red light will turn on while the door is open.

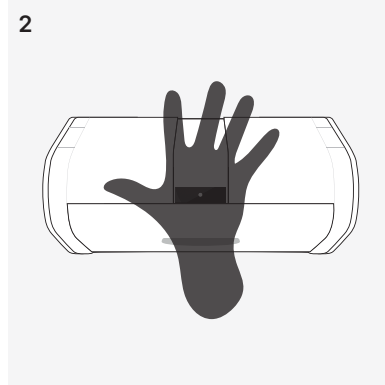


Insert the towel roll, leaving some towel hanging outside of the dispenser. Close and latch compartment. Red light will turn off at this time.

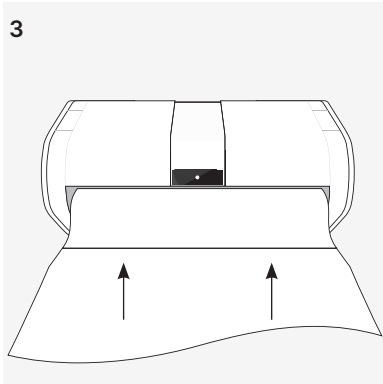
General Operation



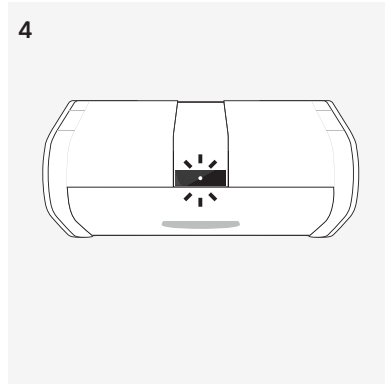
For a single towel, place hand in front of sensor.



For multiple towels, place and hold hand in front of sensor until the desired amount of towel has been dispensed (up to 5 for under cabinet, up to 2 for countertop).



If towels are not taken, the Innovia Dispenser will retract the unused towels.



Red light indicates that the Innovia Dispenser is out of towels or the unit needs to be reset.

One-Year Limited Warranty

(This warranty is applicable only in the United States and Canada)

WHAT DOES THE WARRANTY COVER?

It covers any defect in material or workmanship; however, the liability of Georgia-Pacific Consumer Products LP will not exceed the purchase price of the product.

HOW LONG DOES THE WARRANTY LAST?

It expires one year after the date of the original purchase.

HOW DO YOU GET SERVICE?

For warranty information and troubleshooting, refer to www.innoviahome.com or call customer satisfaction at 1-800-2TELLGP (835547). Be sure to save your receipt as proof of the date of sale.

WHAT WILL WE DO TO HELP YOU?

Georgia-Pacific Consumer Products LP will provide you with a replacement product that is either new or factory refurbished.

WHAT DOES THE WARRANTY NOT COVER?

- Damage to the product from commercial use.
- Damage to the product from misuse, abuse or neglect.
- Products that have been modified in any way.
- Products used or serviced outside the country of purchase.
- Shipping and handling costs associated with replacing the product.

Damages (including, without limitation, special, consequential, incidental, and indirect damages). However, some jurisdictions do not allow the exclusion, so this limitation may not apply to you.

HOW DOES STATE LAW RELATE TO THIS WARRANTY?

This warranty gives you specific legal rights, and you may also have other rights that vary from jurisdiction to jurisdiction.

Home Innovation

Visit:

Innoviahome.com/videos
for an instructional video

Contact us with questions
or comments at:

1-800-2TELLGP (835547)
info@innoviahome.com
8:30am - 5:00pm EST

